

December 15, 2020  
School Building Committee

A meeting of the School Building Committee was held on Tuesday, December 15, 2020 at 5:00 pm. Due to current health department restrictions, the meeting was held through remote participation.

Members present by roll call:

	<u>Present</u>
Donald Humason, Jr.	X
Stefan Czaporowski	X
Stacy Burgess	X – no audio
Shannon Barry	X - entered 5:04 pm
Chris Carey	X
Ramon Diaz	X – entered at 5:07 pm
Ralph Figy	X – entered at 5:04 pm
Bryan Forrette	X - entered at 5:04 pm
Shelly Hazlett	absent
Bridget Matthews-Kane	X
Bill Parks	absent
Brian Sullivan	absent
Cindy Sullivan	X
Tammy Tefft	X
Chris Tolpa	X
Lisa Benoit	<u>absent</u>

12

Also in attendance:

OPM-P3 Representative: Dan Pallotta

Caolo & Bieniek Representatives: Curtis Edgin and Jim Hannifin

Dodson and Flinker, Inc. Representative: Peter Flinker

Cindy Minicucci, Superintendent's Secretary

At 5:02 pm Chairman Donald Humason called the meeting to order.

2. Audio recording or video recording of open session: video recording for Channel 15

3. Approval of December 2, 2020 School Building Committee meeting minutes:

Ralph Figy moved, Cindy Sullivan seconded to approve the December 2, 2020 School Building Committee meeting minutes, as presented.

	<u>YES</u>	<u>NO</u>
Donald Humason, Jr.	X	
Stefan Czaporowski	X	
Stacy Burgess	no audio	
Shannon Barry	X	

Cindy Sullivan	X
Tammy Tefft	X
Chris Tolpa	X
Lisa Benoit	<u>X</u>
	12

A true copy, Attest:

---

Donald Humason, Jr. Chair  
Westfield School Building  
Westfield School Committee

DH/cm

Minutes approved: \_\_\_\_\_

# Whole School Diagram

- Welcoming Entrance
- Media Center Front & Center
- Public Zone Separated from Classroom Neighborhoods
- Classroom Neighborhoods w/ Outdoor Connections

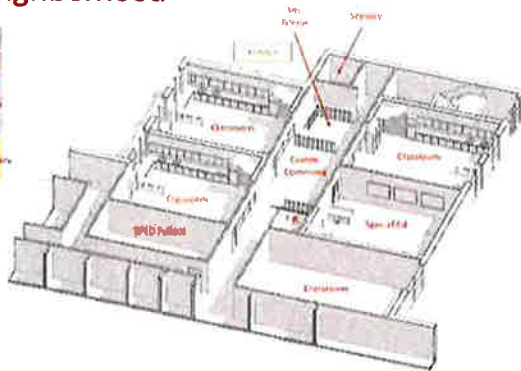


# Westfield Elementary School Project PDP Update

Building Committee Meeting  
December 15, 2020



# Classroom Neighborhood



# SUMMARY:

The purpose of the Preliminary Design Program (PDP) is to define the programmatic functional, special, and environmental requirements of the educational facility to meet the District's Educational Program.

# TOPICS:

- Introduction
- Educational Program Updated (Single and Dual Enrollment programs)
- Site Development Update
- Building Organizations
- Classroom Neighborhood
- Sample Options - Single and Dual Enrollments / New Facility vs. Renovation & Addition

# Site Development Update

- Developing options for building siting, pedestrian circulation, vehicle circulation, playgrounds & construction factors.
- The Site Survey Identified a portion of the school grounds which are not be under the City's Ownership and Control.
- Considering options for acquiring / developing residential abutters on Franklin Street



**AL ENROLMENT OPTION  
v Building  
ion 02A**

Construction Phasing Required  
and Floor Sq. Ft = 23,031  
of Sq. Ft. = 86,718  
Grossing Factor = 1.46



**DUAL ENROLMENT OPTION  
New Building  
Option 02A**

No Construction Phasing Required  
First Floor Sq. Ft = 63,687  
Total Sq. Ft. = 86,718  
Grossing Factor = 1.46



CAULO & BEMEK ASSOCIATES, INC.  
ARCHITECTS

**JAL ENROLMENT OPTION  
novation & Addition  
ion 02C**

Construction Phasing Required  
rogram Sq. Ft = 59,100  
otal Sq. Ft. = 87,069  
rossing Factor = 1.47



**DUAL ENROLMENT OPTION  
New Building  
Option 02A**

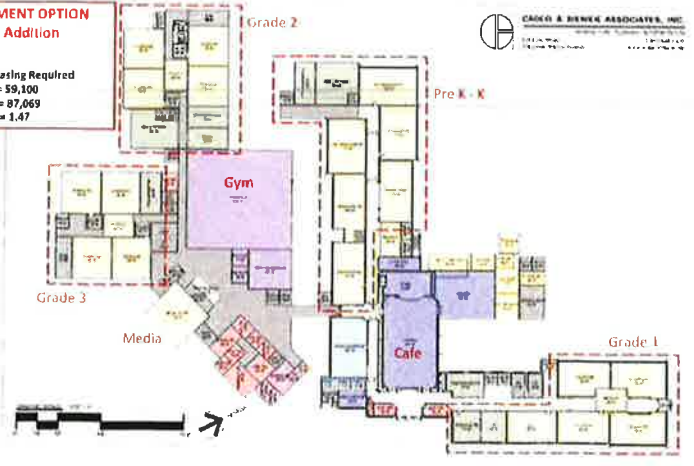
No Construction Phasing Required  
Second Floor Sq. Ft = 23,031  
Total Sq. Ft. = 86,718  
Grossing Factor = 1.46



CAULO & BEMEK ASSOCIATES, INC.  
ARCHITECTS

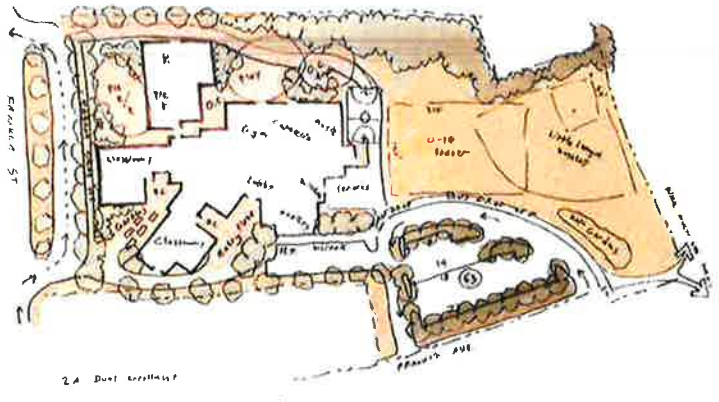
**ENROLMENT OPTION  
novation & Addition  
ion 02C**

Construction Phasing Required  
om Sq. Ft = 59,100  
Sq. Ft. = 87,069  
ing Factor = 1.47



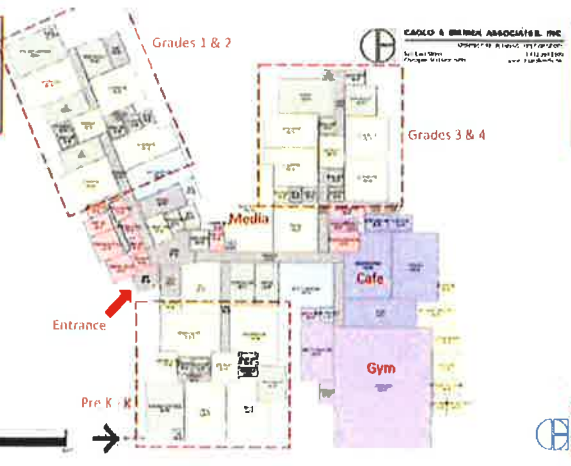
CAULO & BEMEK ASSOCIATES, INC.  
ARCHITECTS

Option 2A: Dual Enrolment, New Building





**SINGLE ENROLMENT OPTION**  
**Building**  
**Option 01A**  
 Construction Phasing  
 Required  
 Program Sq. Ft. = 43,823  
 Total Sq. Ft. = 56,781  
 Grossing Factor = 1.29



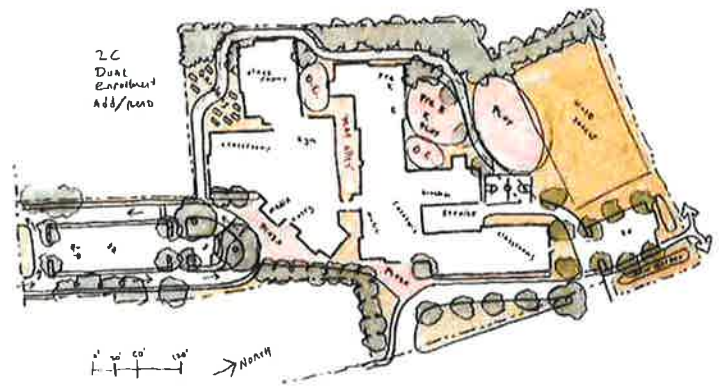
**DUAL ENROLMENT OPTION**  
**Renovation & Addition**  
**Option 02C**  
 Construction Phasing Required  
 Program Sq. Ft. = 59,100  
 Total Sq. Ft. = 17,461  
 Grossing Factor = 1.47



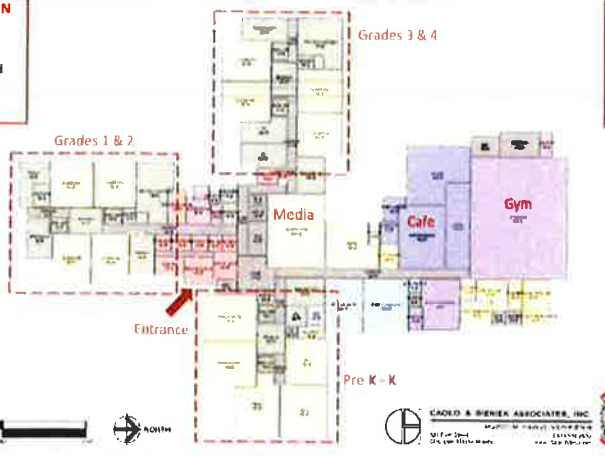
**SINGLE ENROLMENT OPTION**  
**Building**  
**Option 01B**  
 Phasing Required  
 Program Sq. Ft. = 44,653  
 Total Sq. Ft. = 54,906  
 Grossing Factor = 1.22



Option 2C: Dual Enrolment, Add/Reno



**SINGLE ENROLMENT OPTION**  
**Building**  
**Option 01B**  
 Construction Phasing Required  
 Program Sq. Ft. = 44,653  
 Total Sq. Ft. = 53,906  
 Grossing Factor = 1.22



**SINGLE ENROLMENT OPTION**  
**New Building**  
**Option 01A**  
 Construction Phasing  
 Required  
 Program Sq. Ft. = 43,823  
 Total Sq. Ft. = 56,781  
 Grossing Factor = 1.29



**SINGLE ENROLMENT OPTION**  
**Addition/Renovation**  
**Option D1D**

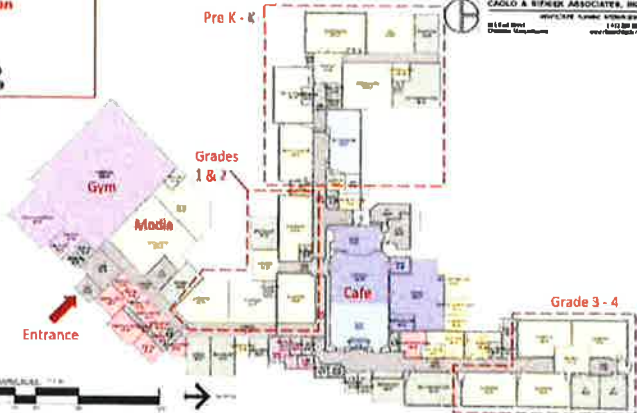
- Construction Phasing Required
- Program Sq. Ft. = 43,649
- Total Sq. Ft. = 59,029
- Grossing Factor = 1.35



**CARLO & GILMER ASSOCIATES, INC.**  
 1111 N. 2nd St.  
 Tampa, FL 33602  
 Phone: 813.251.1111  
 Fax: 813.251.1112

**SINGLE ENROLMENT OPTION**  
**Addition/Renovation**  
**Option D1D**

- Construction Phasing Required
- Program Sq. Ft. = 43,649
- Total Sq. Ft. = 59,029
- Grossing Factor = 1.35



**CARLO & GILMER ASSOCIATES, INC.**  
 1111 N. 2nd St.  
 Tampa, FL 33602  
 Phone: 813.251.1111  
 Fax: 813.251.1112